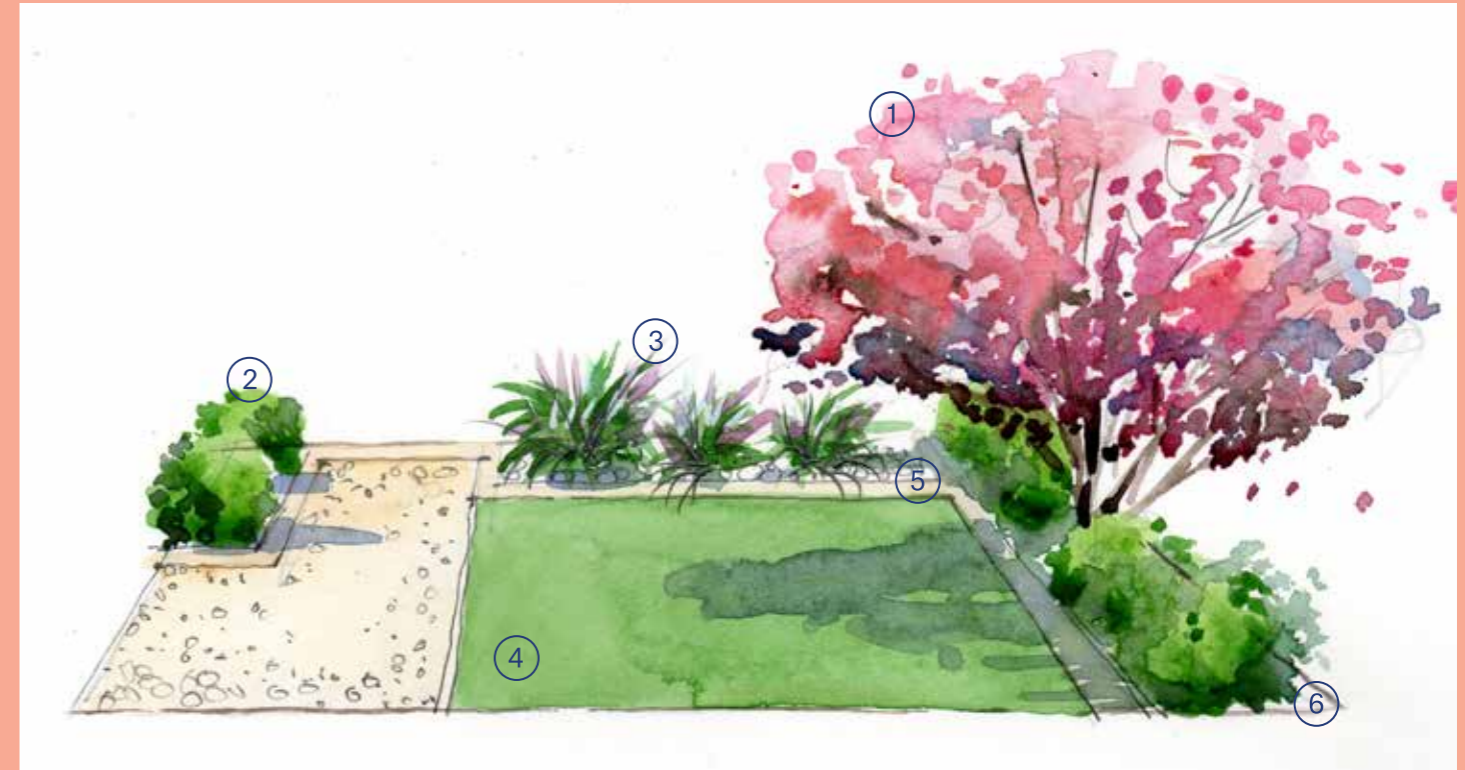


**Hayfield.**

Select Your  
Front Garden



## Palmeri

Gorgeously balanced between formal lines and soft edges, the Palmeri garden will enhance any home with lush hedging plants and a stunning feature tree.

## Myrtle

Simple elegance is the design principle at work within the Myrtle garden. Clean lines and low maintenance plants makes this design ideal for those wanting a garden that loves to be left alone.



1  
Tabebuia Palmeri (Pink Trumpet Tree)



2  
Gardenia Augusta Florida



3  
Liriope Muscari Variegata (Lilyturf)



1  
Lagerstroemia Indica (Crepe Myrtle)



2  
Murraya Paniculata (Orange Jessamine)



3  
Liriope Muscari Variegata (Lilyturf)



4  
Instant Turf



5  
Compacted Toppings On Crushed Rock Base



6  
Mulched Garden Bed



4  
Instant Turf



5  
White Ice Pebbles



6  
Mulched Garden Bed



## Flavum

Throw away the lawn mower and sit back and relax as you watch the Flavum garden grow. Replacing traditional lawn with low growing ground cover and native frangipani – this garden will look after itself.

## Murraya

Home owners will be drawn to this graceful design featuring a showcase flowering tree and stunning grasses to accentuate the clean lines of the Murraya garden.



1  
Hymenosporum  
Flavum  
(Frangipani)



2  
Strelitzia  
Reginae  
(Bird Of  
Paradise)



3  
Trachelospermum  
Asiaticum  
(Asiatic Jasmine)



4  
Compacted  
Toppings on  
Crushed Rock  
Base



5  
Mulched  
Garden Bed



1  
Jacaranda  
Mimosifolia



2  
Murraya  
Paniculata  
(Orange  
Jessamine)



3  
Ophiopogon  
Japonicus  
(Dwarf  
Lilyturf)



4  
Instant Turf



5  
Compacted  
Toppings on  
Crushed Rock  
Base



6  
Mulched  
Garden Bed



## Floribunda

If formality is not your thing – consider the Floribunda garden. Circular lines and a garden bed featuring hardy plants that work in harmony together make this a garden ideal for any home façade.

## Indica

Free flowing lines and sweeping pathways bring an individual style and beauty to the Indica garden. A garden designed for easy maintenance and will impress as much on day one, as it will at maturity.



1  
Waterhousea  
Floribunda



2  
Grevillea  
'Poorinda  
Royal Mantle'



3  
Westringia  
Fruticosa  
(Coastal  
Rosemary)



1  
Lagerstroemia  
Indica



2  
Myoporum  
Parvifolium



3  
Dianella  
Caerulea  
'Little Jess'



4  
Instant Turf



5  
Compacted  
Toppings On  
Crushed Rock  
Base



6  
500X500  
Pavers



4  
River Pebbles



5  
Pennisetum  
Setaceum  
'Rubrum'  
(Purple  
Fountain  
Grass)



6  
Landscape  
Rocks

## Select Your Garden

At Hayfield, you have the highly exclusive opportunity to have a home landscaped by a renowned authority on Australian landscaping.

Wes Fleming, Fleming's Director and third generation nurseryman, has designed six curated gardens for each resident to select from for their new Hayfield home.

[Hayfield.com.au](http://Hayfield.com.au)

## Installation

Once you've received your COO (Certificate of Occupancy) and all builder materials have been removed from site, please follow these two easy steps to coordinate the installation of your designer front garden;

1. Contact your client representative from Fleming's to confirm your garden selection: 03 9756 6105 or email: [Hayfieldlandscapes@flemings.com.au](mailto:Hayfieldlandscapes@flemings.com.au)
2. Your Fleming's client representative will contact you to discuss your design preference, alteration for site position and to co-ordinate the installation of your selected gardens.

Fleming's will then take care of all the necessary processes required to finalise the design, build and planting of your designer front garden.

Gardens by



Developed by

**Goldfields**