

# Hayfield.

## HOUSE & LAND



Fixed Price

**\$583,703**

Lot 310, New Road  
The Tottenham

Block size: 480 M<sup>2</sup>

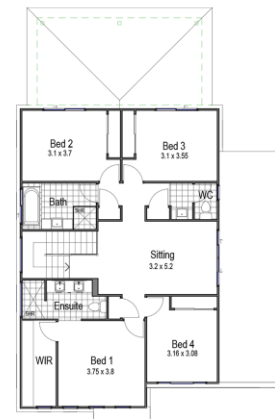
House Size: 274.88 M<sup>2</sup>



Fixed price package includes:

The Tottenham with its contemporary façade built to our industry leading inclusions and land plus:

- Icon Features and Finishes Inclusions
- Allowance for any Sapphire Facades at no extra cost
- Stain Grade Stairs with Glass Balustrade
- Vinyl Plank or Carpet to main floor upstairs
- Fixed Site Costs
- Exposed aggregate driveway
- Colorbond Roof
- 2590mm Ceiling Height
- 900mm Executive Freestanding Oven
- Render to the front facade
- Feature front door
- Council building and water application fees
- Front Landscaping By Developer



**G&P BUILDERS**

# Hayfield.

Level One Text

## Level Two

Level Three

Level Four



Level One Text

Level Two Text

· Level Three Text

Level Four Text

1. Level Five Text

Level Six Text