

# Hayfield.

## HOUSE & LAND



Fixed Price

**\$482,892\***

Lot 354 Hayfield Ripley

Vale on display at Spring

Mountain.

Block size: 480M<sup>2</sup>

House size: 257 M<sup>2</sup>

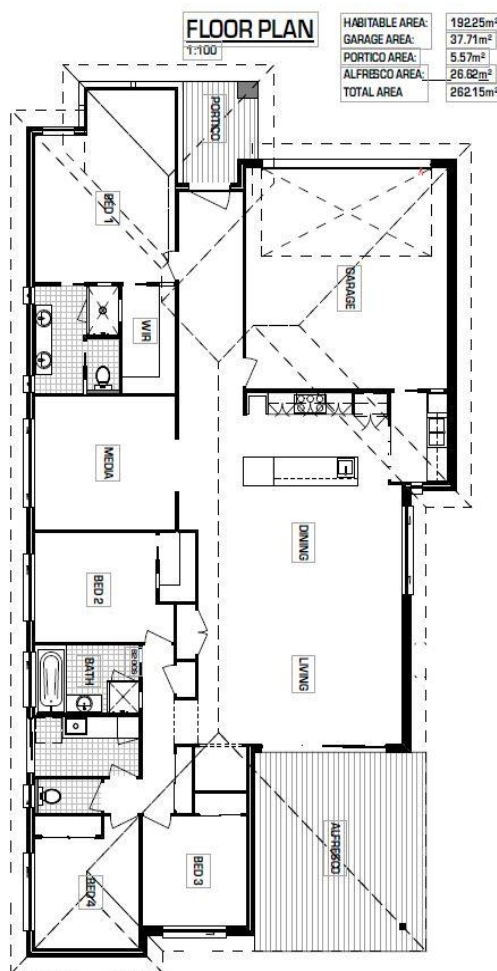


### Neptune Homes

Fixed price package includes:

#### THE VALE

- Façade included
- Aggregate driveway & path up to 50m<sup>2</sup>.
- Colour bond roof.
- Rendered letter box & cloths line.
- Grey glass to all windows & glass doors.
- Floor coverings throughout.
- LED Downlights & Fans to Bedrooms.
- 2590mm raised ceilings
- Stone benchtops to Kitchen Bathrooms
- Ducted Air Conditioning
- Westinghouse Gas Appliance Pack.
- Neptune Welcomes design changes.
- *FREE front Landscaping by Developer*



**Dianna James - Colliers**  
**0409 714 007**

hayfield.com.au

Developed by  
**Goldfields**