

Hayfield.

HOUSE & LAND



Fixed Price
\$446,273

Lot 521, New Road
Moreton

Block size: 375 M²
House size: 218 M²

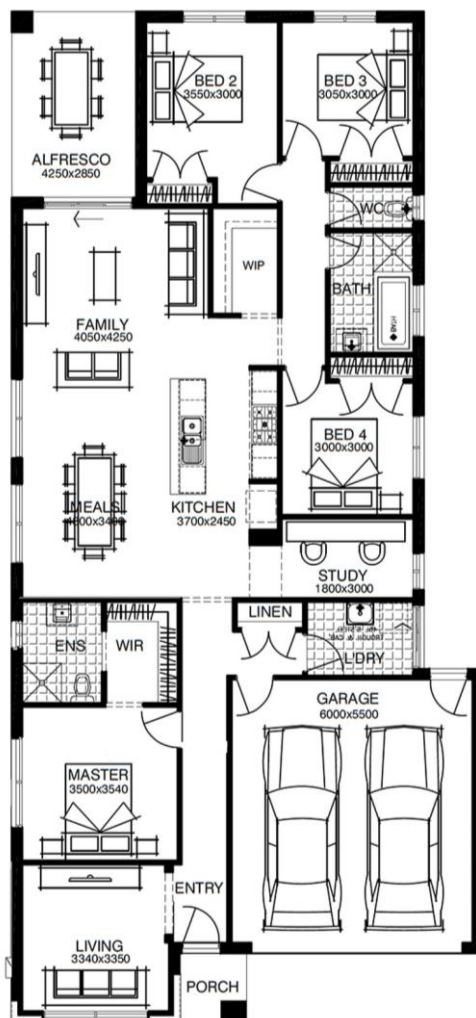


SIMONDS HOMES:



Fixed price package includes:
The Moreton with Landsborough façade
plus

- Fixed Site Costs
- Developer and Council Requirements
- Lifetime Structural Guarantee**
- Floor Coverings
- 900mm Appliances
- Caesarstone Benchtop to Kitchen
- Overhead Cupboards to Kitchen
- LED Downlights
- Exposed Aggregate Driveway
- Concrete to Porch and Alfresco
- *FREE front Landscaping by Developer*



Dianna James - Colliers
0409 714 007

hayfield.com.au

Developed by
Goldfields