

# Hayfield.

## HOUSE & LAND

**Domaine**homes



**Domenic Pagano - DOMAINE**  
**Mobile - 0428049768**

From  
**\$449890\***

Lot 522, New Road  
Vienna 21 DG

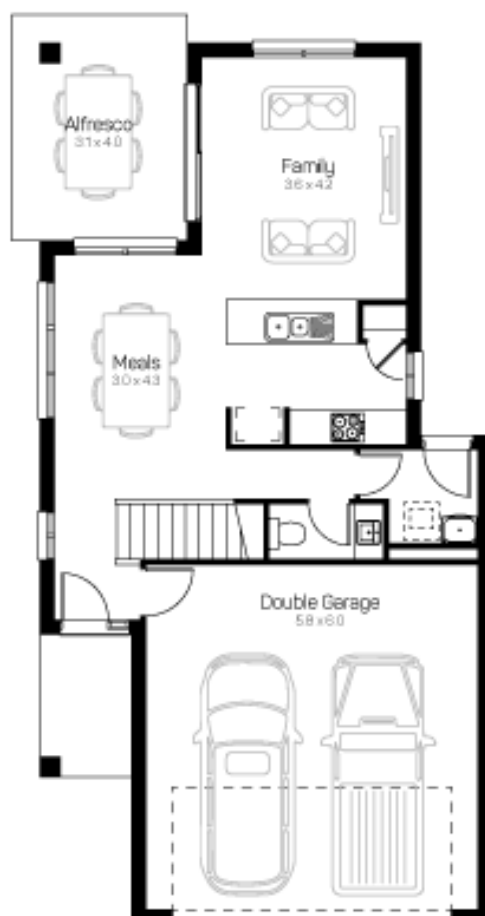
Block size: 315 M<sup>2</sup>  
House size: 210 M<sup>2</sup>



### **DOMAINE HOMES by Clarendon**

Turn Key DELUXE Inclusions PACKAGE  
Our GRENADA 22 Amazing !!

- Floor covering options included
- Upgraded Façade Included
- DELUXE Inclusions
- Colourbond or Tiled Roof
- Alfresco Entertaining
- Floorplan Options
- Polytec 40mm Stone Benchtop
- 900mm European Designed Appliances
- Feature Front Door
- Council fees included
- *Fencing, Driveway, External Tiling & Letterbox plus more all Included*
- **LIFETIME STRUCTURAL WARRANTY**
- *Front Landscaping by DEVELOPER*



**Dianna James - Colliers**  
**0409 714 007**

hayfield.com.au

Developed by  
**Goldfields**