

Amendments by SURVEY MARK PTY LTD
(ACN 164 171 322)
Director *L. Hayes*
Date 19.7.2023

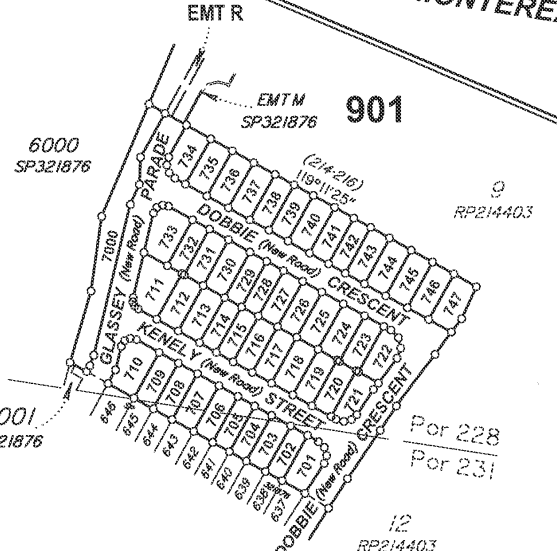
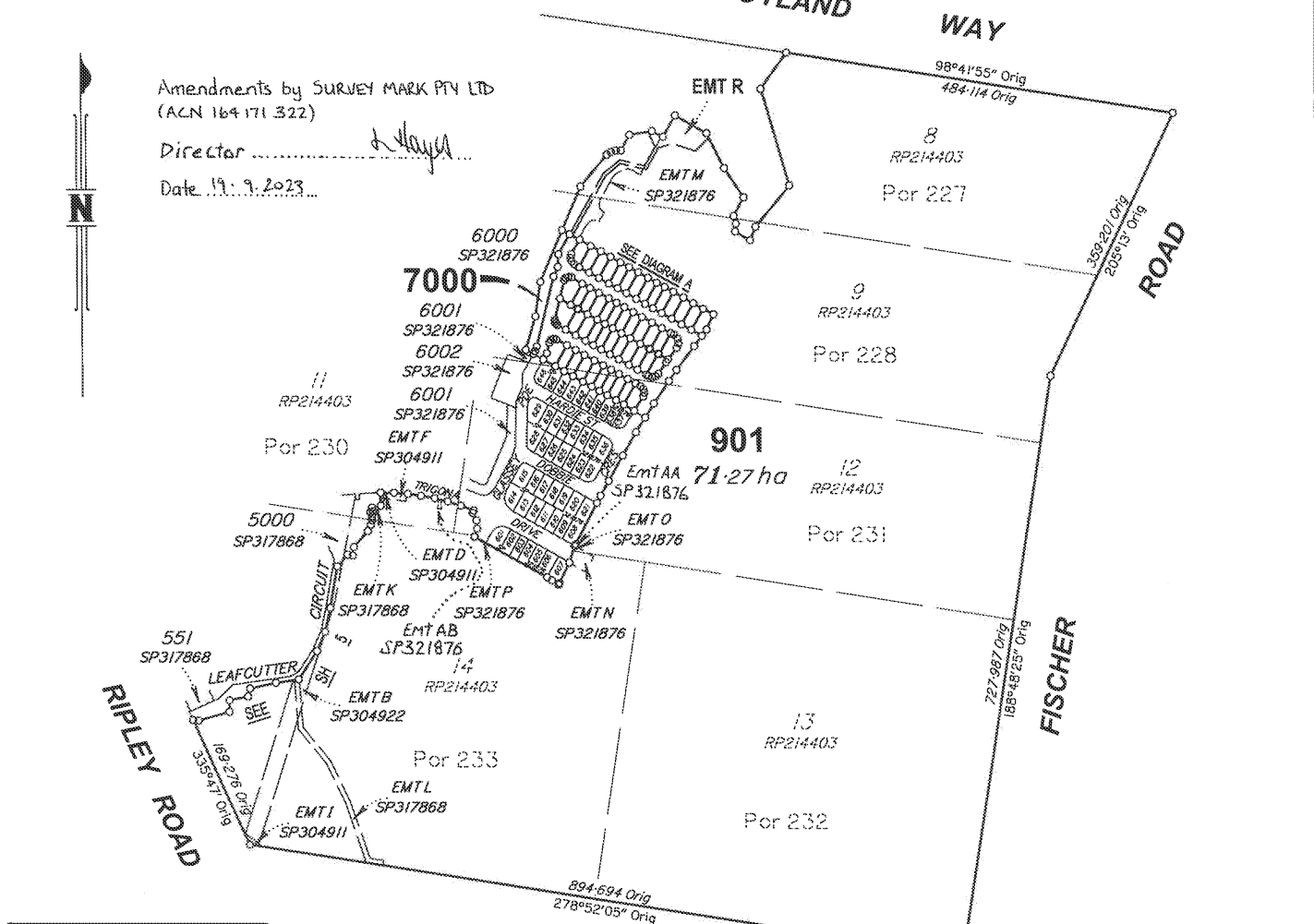


DIAGRAM A
Scale 1:3000

Area of New Road
9204m²

See Sheet 3 for Lot 7000 & Emt R.

See Sheet 6 for Lots 701-721.

See Sheet 7 for Lots 722-747.

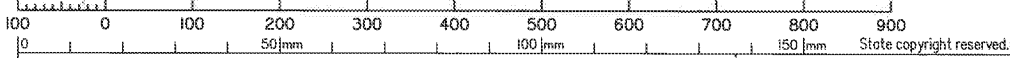
See Sheet 8 for Permanent Marks
Table & Reference Marks Table.

Original information compiled from SP321876
in the Department of Resources.

Peg placed at all new corners, unless otherwise stated.

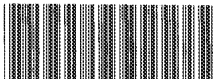
Lots 701 - 747, 901, 7000 & New Road restricted to
the Depth of 21.336m from the surface as defined by M3119

Scale 1:6000 - Lengths are in Metres.



SURVEY MARK PTY LTD (ACN 164 171 322) hereby certify that the land comprised in this plan was surveyed by the corporation, by Lee EVANS, Surveying Associate, for whose work the corporation accepts responsibility, under the supervision of Lance Edmond HAYES, Cadastral Surveyor and that the plan is accurate, that the said survey was performed in accordance with the Survey and Mapping Infrastructure Act 2003 and Surveyors Act 2003 and associated Regulations and Standards and that the said survey was completed on 02/03/2023.

L. Hayes Director
Date 23.3.2023

Plan of Lots 701-747 (Restricted), Lot 901 (Restricted), Lot 7000 (Restricted) & Easement R in Lot 901		Scale: 1:6000
Cancelling Lot 901 (Restricted) on SP321876		Format: STANDARD
LOCAL GOVERNMENT: IPSWICH CITY COUNCIL	LOCALITY: RIPLEY	 SP321881
Meridian: MGA (Zone 56) vide SP321876	Survey Records: No	

722740264

EL 400 \$6,284.25
12/09/2023 09:44:25

(Dealing No.)

Plans may be rolled.
Information may not be placed in the outer margins.

4. Lodged by

(Include address, phone number, reference, and Lodger Code)

Existing		Created		
Title Reference	Description	New Lots	Road	Secondary Interests
51324742	Lot 901 on SP321876	701-747, 901 & 7000	New Rd	Emt R

Easement M on SP321876 is partially absorbed by New Road.

MORTGAGE ALLOCATIONS

Mortgage	Lots Fully Encumbered	Lots Partially Encumbered
722453011	701-747, 901 & 7000	--

ENCUMBRANCE EASEMENT ALLOCATIONS

Easement	Lots to be Encumbered
719118435 (Emt B on SP304922)	901
719778922 (Emt F on SP304911)	901
719778923 (Emt D on SP304911)	901
719778923 (Emt I on SP304911)	901
720781340 (Emt K on SP317868)	901
720781340 (Emt L on SP317868)	901
722682699 (Emt N on SP321876)	901
722682698 (Emt O on SP321876)	901
722682698 (Emt M on SP321876)	901
722682698 (Emt P on SP321876)	901
722682700 (Emt AA on SP321876)	901
722682700 (Emt AB on SP321876)	901

ADMINISTRATIVE ADVICES

Administrative Advice	Lots to be Encumbered
710868523	701-747, 901 & 7000

SURVEY REPORT

REINSTATEMENT

- Plans searched: SP321876.
- The base parcel has been fixed by measuring a number of original marks from the previous plan (SP321876).
- All angles and distances agree with SP321876.

CONNECTION TO DATUM

The underlying plan SP321876 is adequately connected to datum through GNSS observations and a Network RTK solution on a number of marks with good geometry. By measuring original marks from SP321876, this survey (SP321881) has sufficiently connected to datum.

6. Building Format Plans only.

I certify that:
 * As far as it is practical to determine, no part of the building shown on this plan encroaches onto adjoining lots or road.
 * Part of the building shown on this plan encroaches onto adjoining * lots and road

Cadastral Surveyor/Director * Date
~~delete words not required~~

7. Lodgement Fees :

Survey Deposit	\$
Lodgement	\$
..... New Titles	\$
Photocopy	\$
Postage	\$
TOTAL	\$

8. Insert Plan Number **SP321881**

701 & 702	Por 231
703 - 709	Por 228 & Por 231
710 - 747 & 7000	Por 228
901	Por 227, Por 228 & Pors 230-233
Lots	Orig

2. Orig Grant Allocation :	5. Passed & Endorsed :
3. References :	By: Survey Mark Pty Ltd
Dept File :	Date :
Local Govt :	Signed :
Surveyor : 3366-0046	Designation : Cadastral Surveyor



BOYLAND WAY

JOINS SHEET 1

6000
SP321876

8
RP214403

EMT R
2369m²

EMT M
SP321876

901

Por 227
Por 228

RP214403

7000
1753m²

734

GLASSEY (New Road) PARADE

710

6001
SP321876

646
SP321876

JOINS SHEET 6

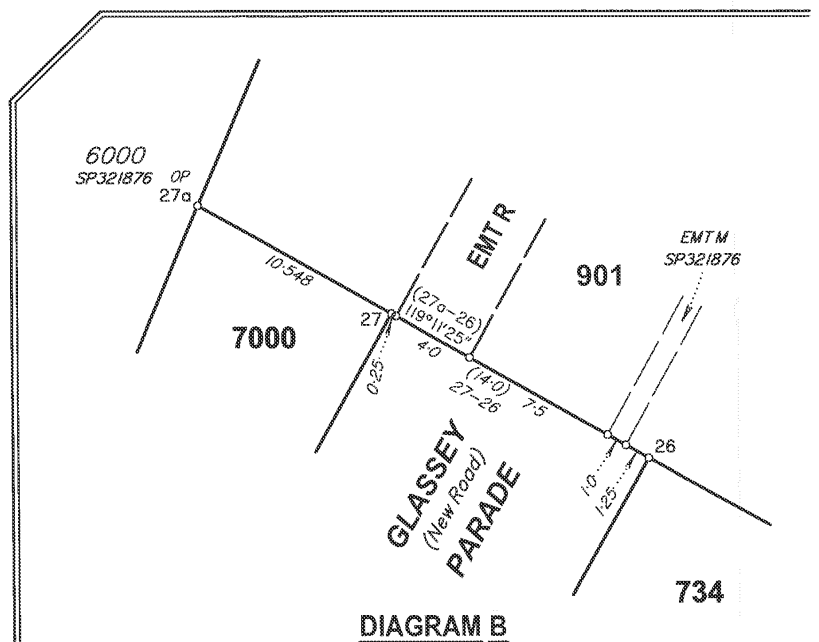
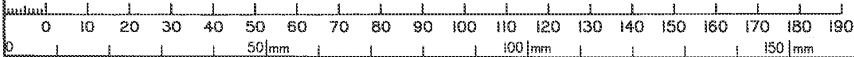


DIAGRAM B

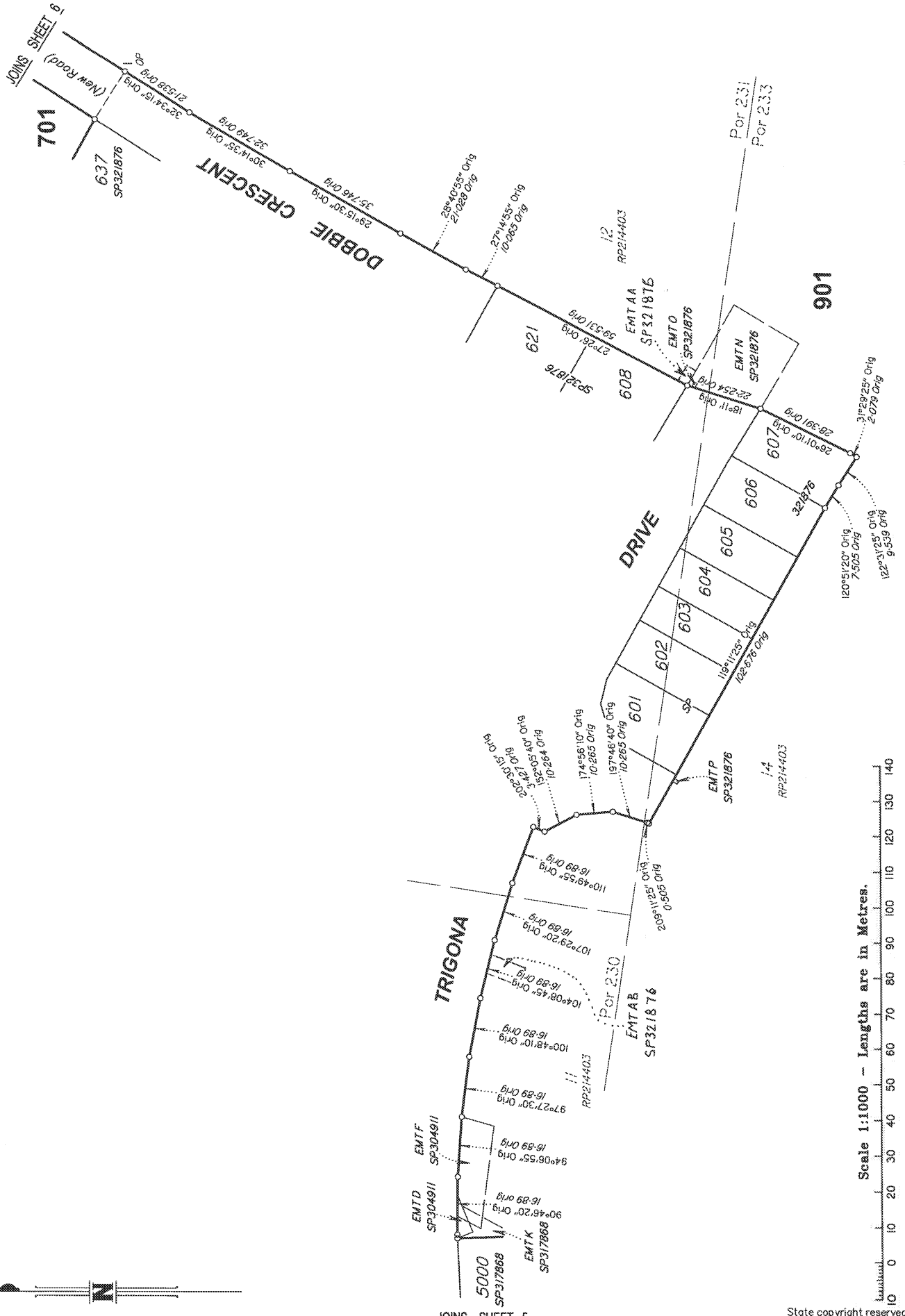
Scale 1:250

Scale 1:1250 - Lengths are in Metres.

State copyright reserved.



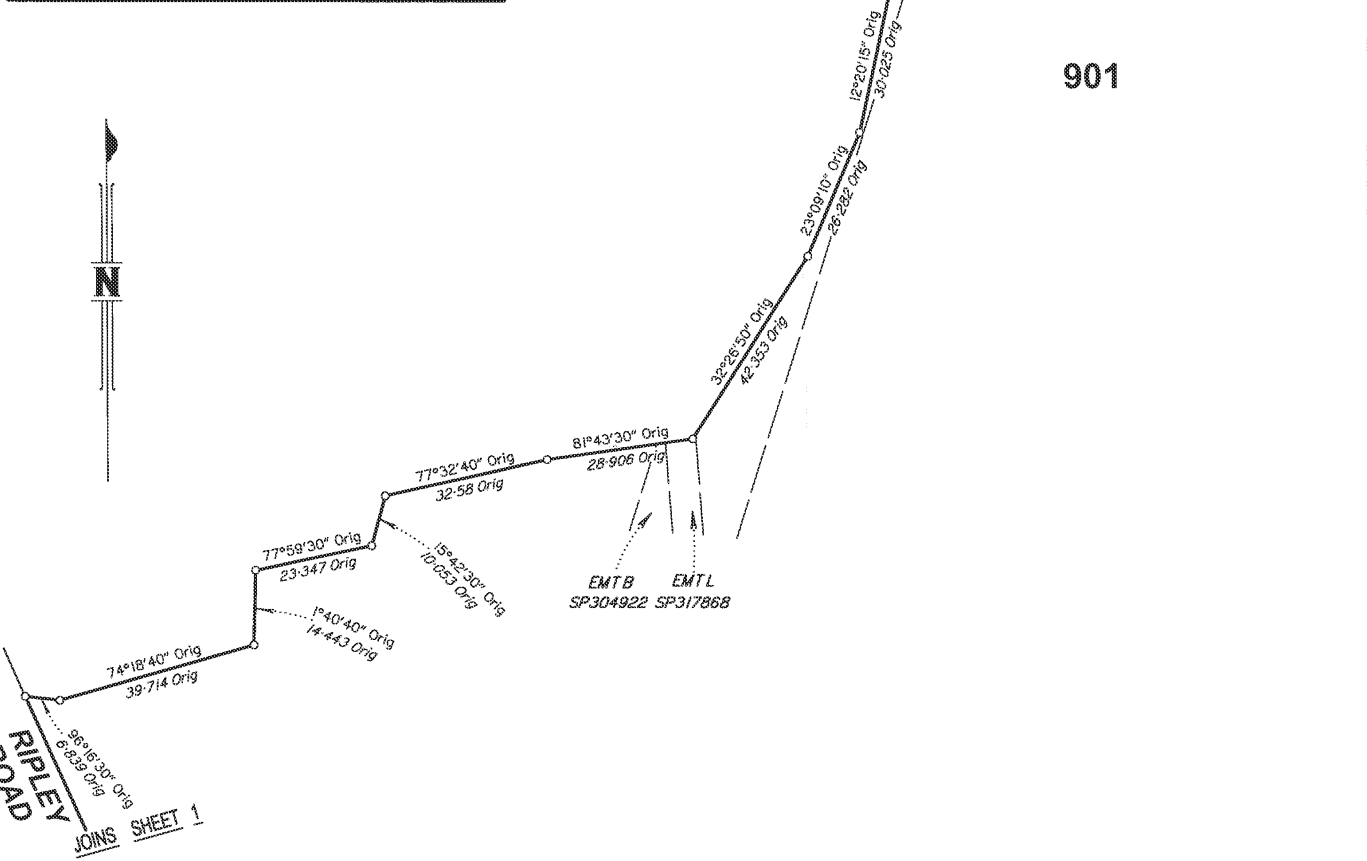
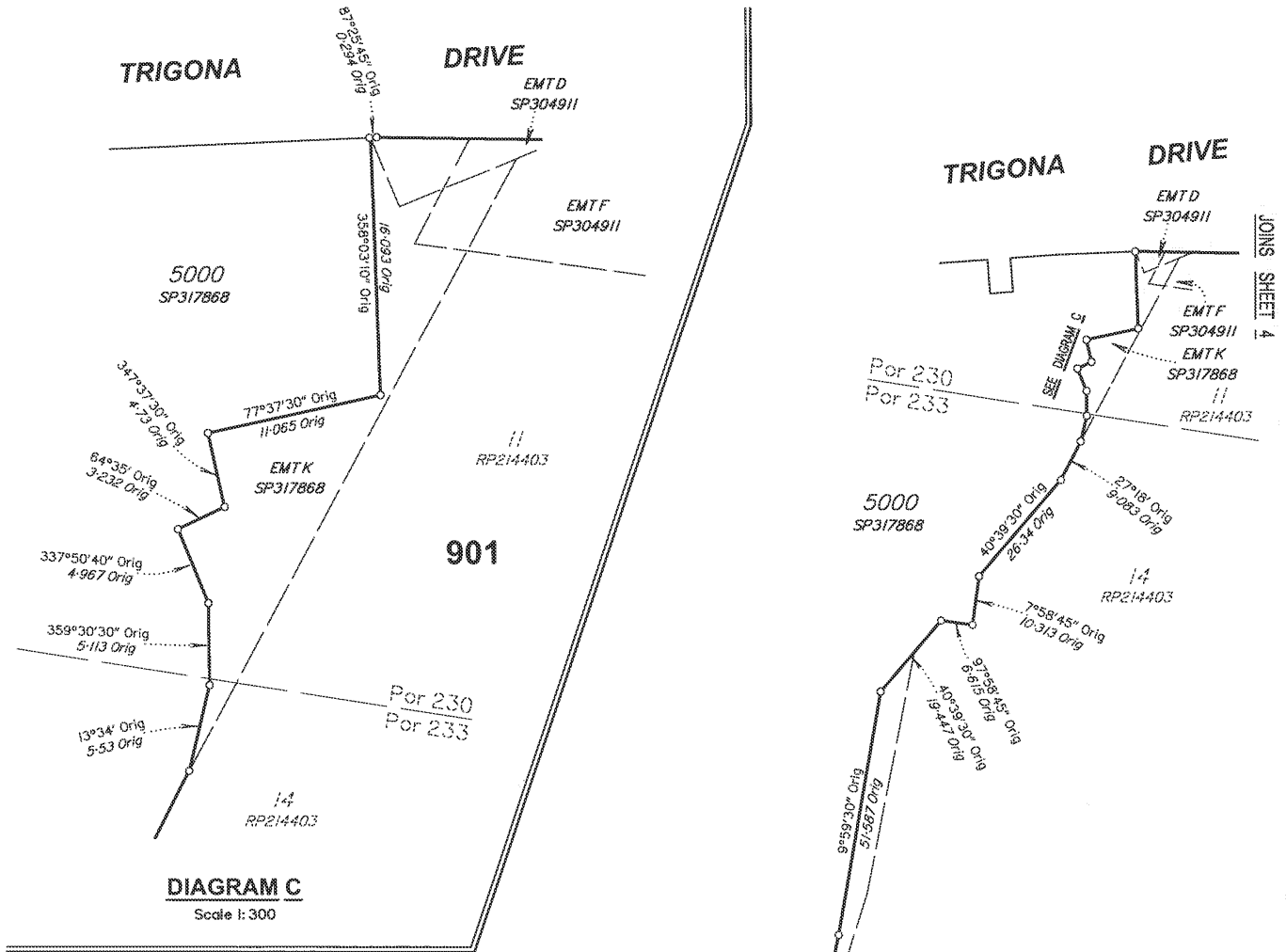
Insert Plan Number
SP321881



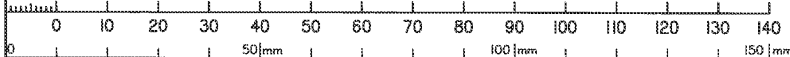
JOINS SHEET 5

State copyright reserved.

Insert Plan Number **SP321881**



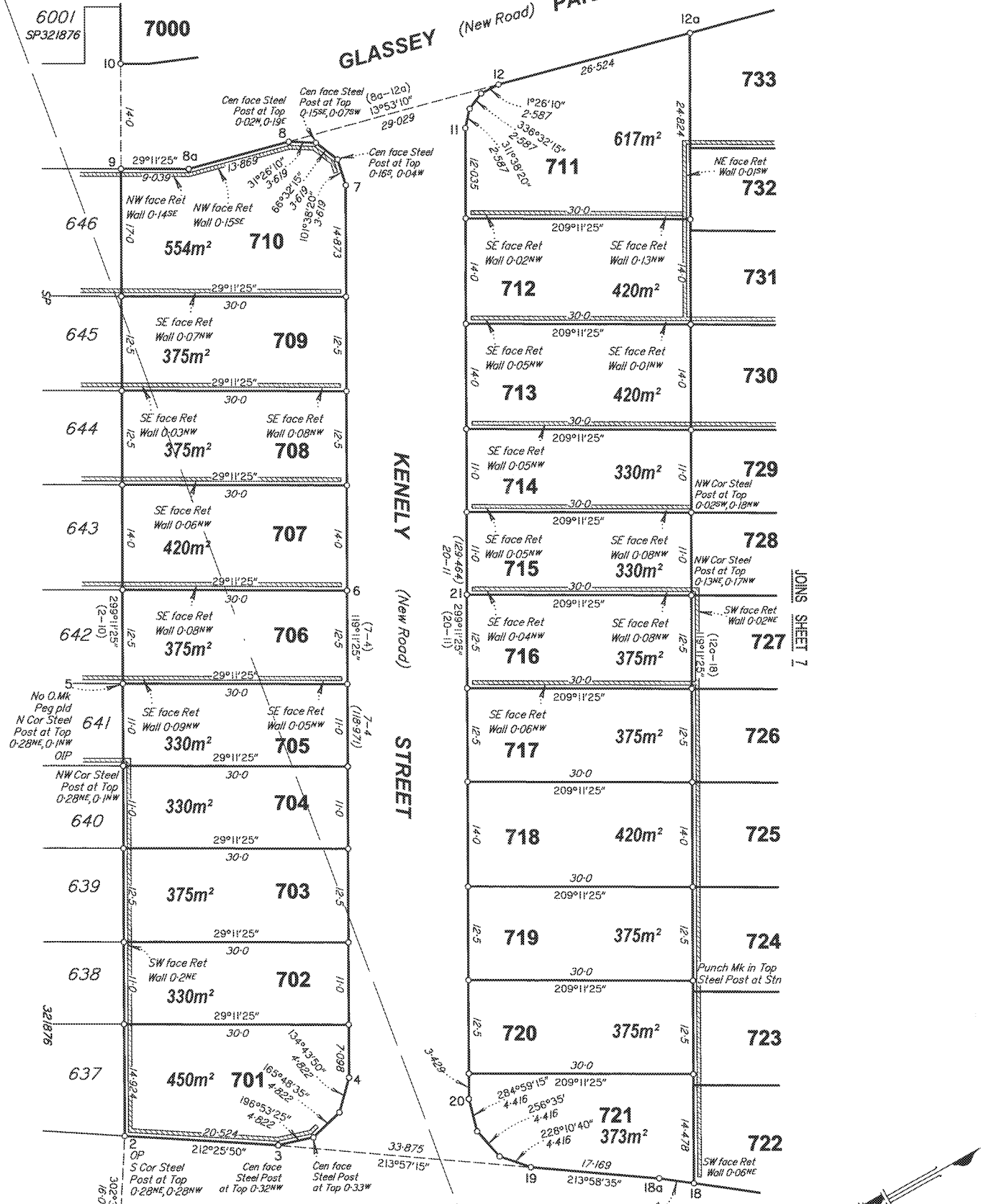
Scale 1:1000 - Lengths are in Metres.



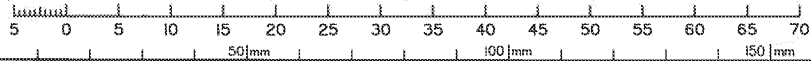
State copyright reserved.

Insert Plan Number **SP321881**

JOINS SHEET 3



Scale 1:500 - Lengths are in Metres.



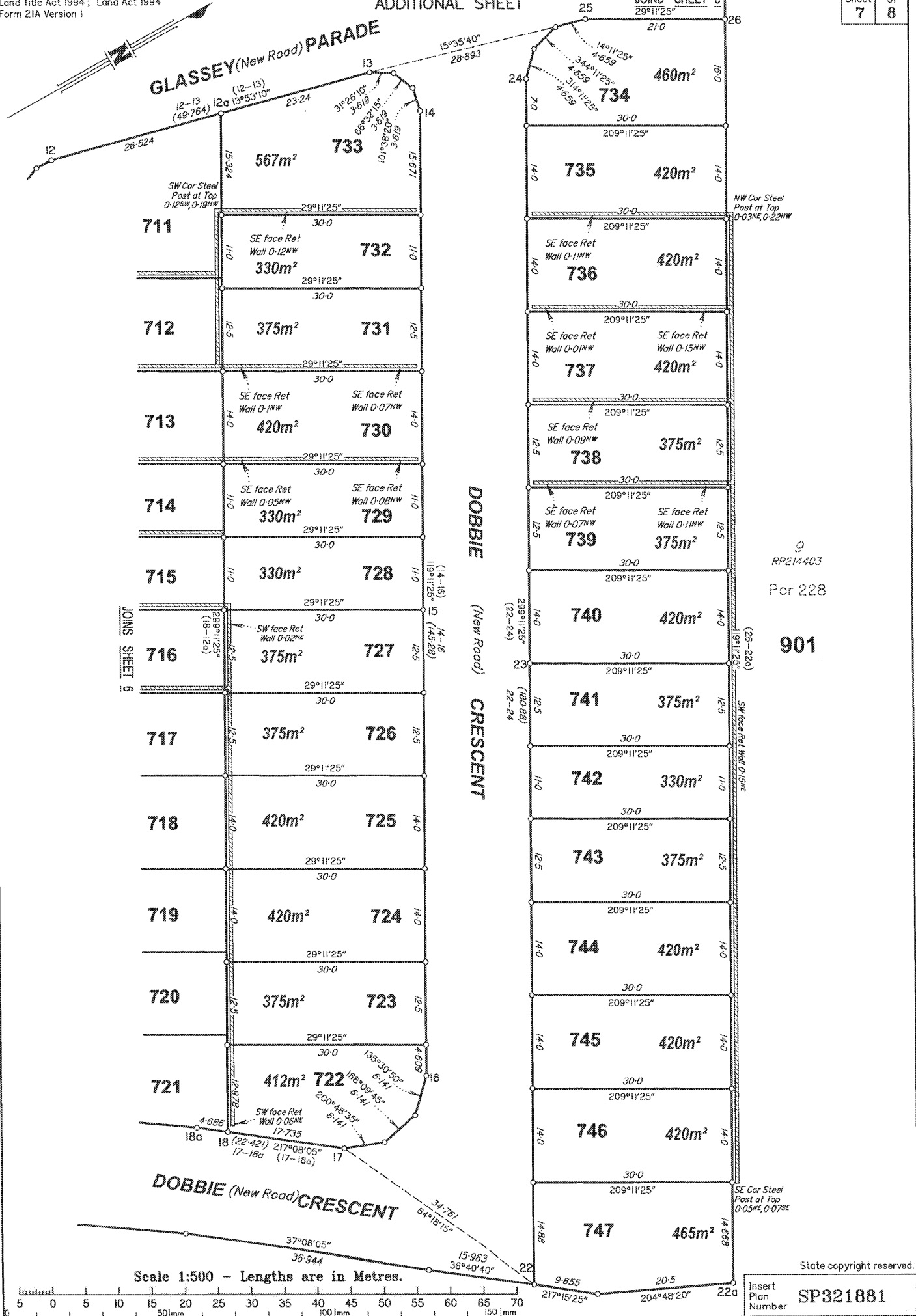
State copyright reserved.

Insert Plan Number **SP321881**

901 RP214403

RP214403

pot 2/28
pot 2/31



GLASSEY (New Road) PARADE

DOBBIE (New Road) CRESCENT

9
RP214403
Por 228
901

SW Cor Steel Post at Top 0-12SW, 0-19NW

NW Cor Steel Post at Top 0-03NE, 0-22NW

JOINS SHEET 6

SW face Ret Wall 0-19NE

SE Cor Steel Post at Top 0-05NE, 0-07SE

Scale 1:500 - Lengths are in Metres.

State copyright reserved.

Insert Plan Number **SP321881**

PERMANENT MARKS

PM	ORIGIN	BEARING	DIST	NO	TYPE
11-PM		172°52'	4.973	201532	Mini Mark

REFERENCE MARKS

STN	TO	ORIGIN	BEARING	DIST
1	Screw in Kb		309°04'	4.229
2	Screw in Kb		119°50'	3.997
3	Pin		32°35'	3.032
4	Screw in Conc		91°37'	7.258
5	OIP	SP321876	203°19'	23.781
6	Screw in Kb		33°12'	4.096
7	Screw in M/H Surr		4°43'	2.254
8	Screw in Conc		257°45'	4.227
9	Screw in Kb		305°27'	4.099
10	Screw in Kb		126°41'	2.119
10	Pin		13°51'30"	37.154
11	Screw in M/H Surr		138°32'	6.294
12	Screw in G/T		242°45'30"	16.197
13	Screw in G/T		344°33'	20.988
15	Screw in Kb		33°40'	4.095
16	Screw in Kb		54°50'	4.433
17	Screw in Kb		127°36'	3.94
18	Screw in Kb		154°25'	13.375
19	Screw in Kb		133°16'	11.959
20	Screw in M/H Surr		172°41'	2.532
21	Screw in M/H Surr		235°12'	2.336
22	Screw in M/H Surr		287°23'"	8.959
22	Pin		216°28'	0.976
23	Screw in M/H Surr		238°10'	2.464
24	Screw in G/T		279°35'	15.507
25	Screw in Kb		291°32'	4.175
26	Screw in Kb		295°06'	4.142
27	Screw in Kb		125°54'	2.059
27	Pin		127°42'	1.203