

# Hayfield.

**Bella**  
Queensland Properties



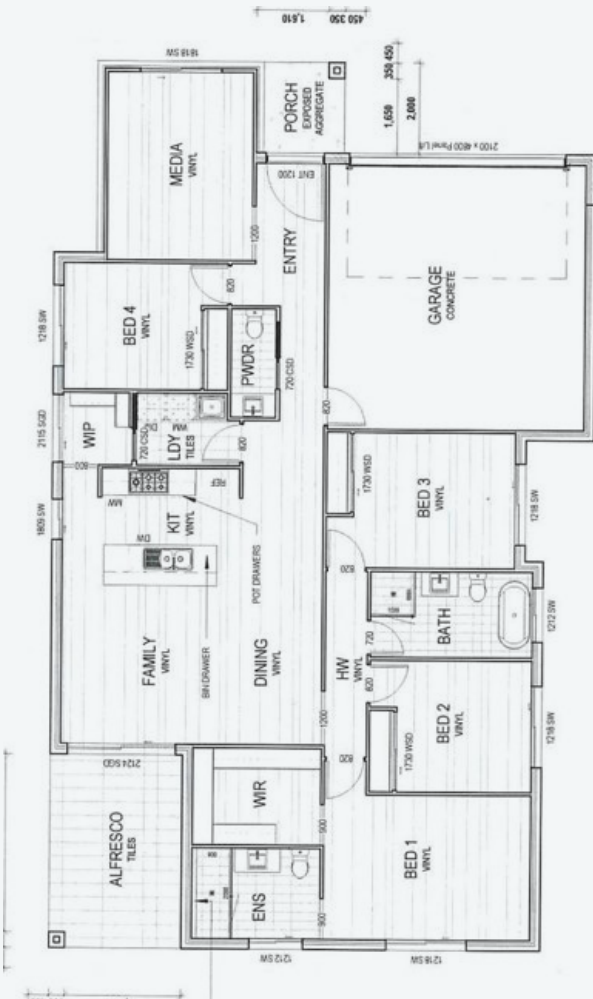
Turn-Key H&L 4  2.5  2  2 

Lot 615 561m2  
House Size 207.17m2

From **\$743,083\***

Our Innovative Package Includes:

- 50 years structural warranty for slab + 25-year warranty on the frame
- Raised 2,590mm ceiling throughout
- Omega freestanding gas cooker, dishwasher & rangehood
- 20mm stone benchtops in the kitchen & vanities
- Huge variety of quality floor coverings to choose from
- Reverse cycle split-system air conditioner
- Flyscreens for windows & sliding doors + Roller blinds for windows
- 1,200mm timber-wise entry door + quality fixtures & fittings
- Exposed aggregate finish concrete driveway
- Under-roof alfresco with non-slip tiles
- \$4,000 fence allowance + \$5,000 landscaping allowance
- Fully lined garage with panel lift door & two remotes
- LED downlights, NBN ready, Power points, TV antenna, etc.
- Plus many more outstanding features!



**Disclaimer:**

Turn-key price HI Soil included

Excludes Bushfire/Acoustics/Retaining Walls

Developed by  
**Goldfields**

Sales by

**Colliers**

Get in touch with us Visit our Sales Suite

 1300 857 646

 sales@hayfield.com.au

 We're open:

Thursday to Monday

10am - 5pm

352 Ripley Rd, Ripley, QLD, 4306