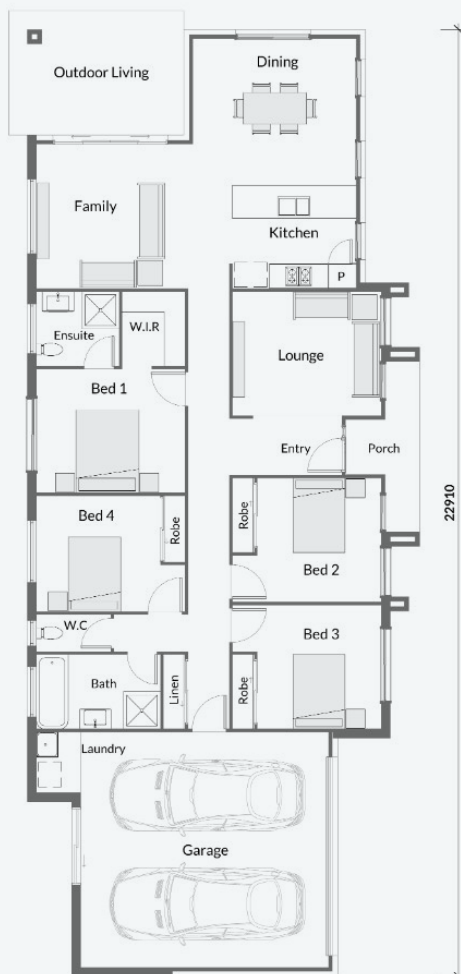


Hayfield.

urbaneHOMES



Daniela MKI.1 4 2 2 2

Lot 734 460m2
House Size 192m2

From **\$753,941***

Urbane Turnkey Inclusions:

- Fixed slab and site costs, including rock removal
- Clothesline wall-mounted with a concrete pad and letterbox
- Exposed aggregate to driveway, porch, and outdoor living area
- Boundary fencing and landscaping to front and rear yards
- Flyscreens and window locks to all operable windows
- LED downlights to living areas, oyster light fittings to other rooms
- Ceiling fans to bedrooms
- 900mm stainless steel kitchen appliances, including a dishwasher
- 20mm Caesarstone benchtops throughout
- Quality floor coverings throughout
- Split system to the family room and bedroom 1
- Roller blinds (single) to windows and sliding doors (excludes bathrooms, ensuite & toilet)

Disclaimer:

Facades used for illustrative purposes only, images may not represent facade that will be built. Refer to standard drawings for full elevation depiction. Refer to full disclaimer.

Developed by
Goldfields

Sales by

Colliers

Get in touch with us Visit our Sales Suite

1300 857 646

sales@hayfield.com.au

We're open:

Thursday to Monday

10am - 5pm

352 Ripley Rd, Ripley, QLD, 4306